



Situation report brought to you by
Child Care Aware® of America, in collaboration with Humanity Road.

Latest News

Kilauea, the youngest and southeastern most volcano on the Island of Hawai'i, is an active shield volcano in the Hawaiian Islands. In early May, a new eruption sprouted in the Leilani Subdivision on the sprawling volcano's southeast flank, with fissures popping up along a 2.5 mile stretch and lava covering 116 acres and claiming 36 structures.

Two new fissures opened on Hawaii's Big Island over the weekend, spewing lava and fumes and forcing more residents to evacuate.

Hawaii's Civil Defense Agency announced the latest crack in the ground Sunday evening. It's the 18th fissure to open on the island since the Kilauea volcano erupted May 3.

Fissure 18 emerged near Halekamahina Loop Road -- where fissure 17 erupted early Sunday, splattering lava tens of feet into the air.

(Source: <https://www.cnn.com/2018/05/13/us/hawaii-kilauea-volcano/index.html>)

According to [Hawai'i Public Radio](#), a total of 18 fissures have appeared in the past week in Leilani Estates. The eruption has destroyed at least 25 homes, and lava has covered more than 115 acres of land. As of Friday, officials say the activity at the fissures have paused for now, but they are still releasing hazardous gases.

As of late today (Sunday, May 13 8:28 HST), activity was dominated by lava fountaining, explosion of spatter bombs hundreds of feet into the air, and several advancing lava flow lobes moving generally northeast from fissure 17 at the downrift (northeast) end of the new fissure system. As of about 7 pm, one lobe was 2 yards thick and advancing roughly parallel to Highway 132. The flow front was just over a half mile southeast of the intersection of Highway 132 and Noni Farms Road.

Based on overflight images late this afternoon, additional lava from fissure 17 was also moving slowly southeast. Volcanic gas emissions remain elevated.

(Source: <https://volcanoes.usgs.gov/volcanoes/kilauea/status.html>)

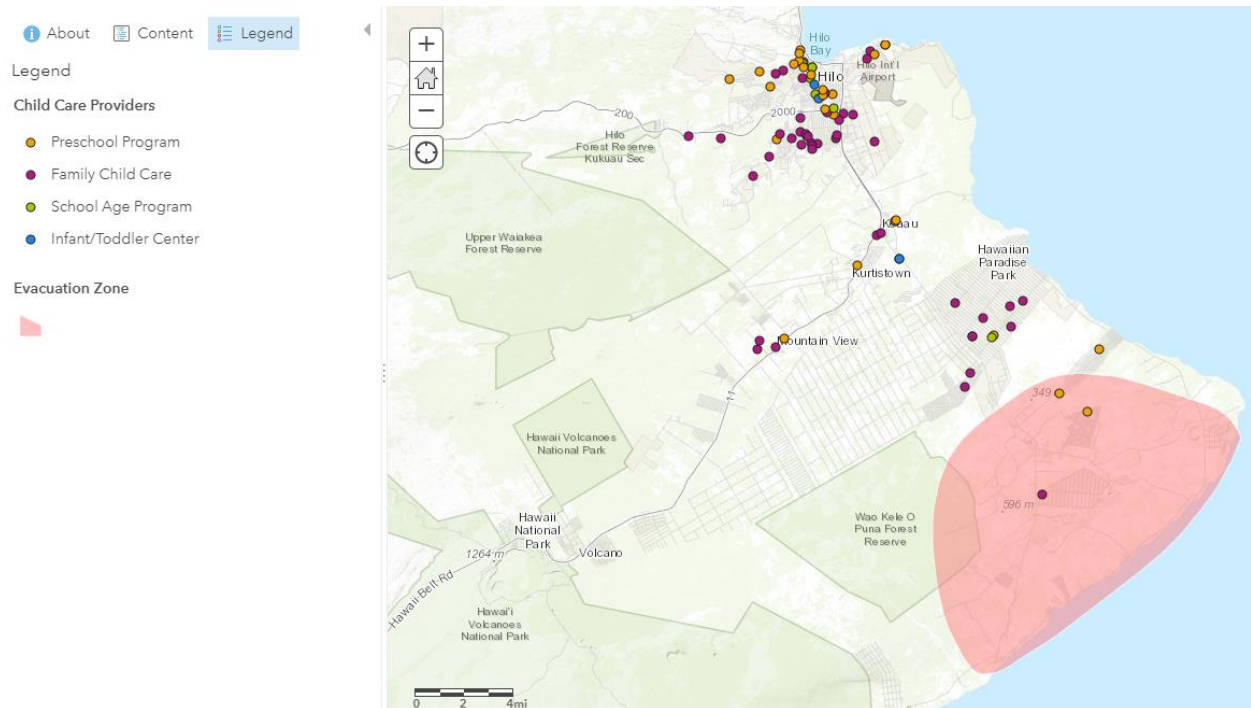
President Donald Trump declared a major disaster in Hawaii after days of volcanic activity that sent molten lava and toxic fumes spewing into residential neighborhoods.

The declaration allows federal assistance to supplement state and local recovery efforts in areas affected by the Kilauea volcanic eruption and earthquake.

Federal funding is available to state, eligible local governments and certain private nonprofit organizations on a cost-sharing basis, the White House said.

(Source: <https://www.cnn.com/2018/05/12/us/hawaii-kilauea-volcano/index.html>)

GIS Mapping (Interactive version available here: <https://arcg.is/nfSXi>)



Impacts to Children

On Hawaii’s Big Island, there are:

155 child care providers (Licensed Capacity: 3923 children)

- 74 Family Child Care Homes
- 8 Infant/Toddler Centers
- 59 Preschool Programs
- 14 School Age programs

Utilizing Child Care Aware® of America mapping, we were able to assert that in the evacuation zone, there is one family child care home provider licensed for 6 children, as well as one preschool program with a capacity of 38 children, and a Head Start program with a capacity of 24 children.

Health Impacts

Ongoing volcanic activity at the summit and East Rift Zone of Kīlauea Volcano, on the Island of Hawai‘i, creates the potential for airborne health hazards to residents and visitors. For additional information related to the hazy air pollution caused by volcanic



emissions from the volcano (vog), please refer to this document from the State of Hawai'i Department of Defense: <https://dod.hawaii.gov/hiema/files/2018/05/FAQ-1.pdf>

The Hawaii Interagency Vog Information Dashboard is available here: <https://vog.ivhhn.org/>.

One of the public health concerns that arise during the rare eruptions of a volcano is the toxic chemicals found in the air of the volcanic fumes. Of special concern is sulfur dioxide gas. First responders can make sure they have access to information on protective equipment and clothing, health effects and medical treatment, and protective distance information by downloading NLM WISER (Wireless Information System for Emergency Responders). <https://wiser.nlm.nih.gov/>

- WebWISER sulfur dioxide: <https://go.usa.gov/xQ55m>
- ERG Guide Book sulfur dioxide: <https://go.usa.gov/xQ55w>

Masks Warning from The Hawaii Department of Health: Hawaii Dept of Health is warning consumers that no mask sold in stores provides protection from the extremely dangerous volcanic gases that are being released from the current volcanic eruption. The best way to protect yourself and your family from the extremely dangerous volcanic gases is to leave the immediate area of the volcano defined by the police and fire department. This is especially important if you or a family member has asthma or other respiratory disease or illness. Source: <http://dod.hawaii.gov/hiema/caution-masks-sold-in-stores-do-not-protect-from-extremely-dangerous-volcanic-gases/>

Logistics

A public map of fissures, road blocks, and subdivisions is available from the County of Hawai'i, available here: <http://www.hawaiicounty.gov/active-alerts/public-map-of-fissures-road-blocks-and-subdivisions.html>

Shelters

The American Red Cross has open shelters for evacuated residents at the Pahoa Community Center and Keaau Community Center. As of noon on Friday, there were 200 residents at the Pahoa Community Center and 2 residents at the Keaau Community Center. Both shelters are pet-friendly.

(Source: <http://www.redcross.org/news/article/local/hawaii/Red-Cross-Responds-to-Kilauea-Lava-Threat>)

Partner Updates

Children's Disaster Services has set up a children's area at the shelter at the Pahoa Community Center. Volunteers are staffing the play area as needed. (Updated: 5/7/19)

The following updates were provided by [Humanity Road](#). Using innovative technology and social listening platforms, Humanity Road helps locate, organize and connect people and communities with valuable information and critical resources. Because when disaster strikes, every call for help should be heard.



Hawaii State Government Links

Governor of Hawaii [website](#) [twitter](#) [Facebook](#)
Emergency Management Agency Situation Updates [website](#) [twitter](#), [Facebook](#)
Hawaii Department of Public Safety [website](#) [twitter](#) [Facebook](#)
Hawaii State Department of Health Resources [website](#) [twitter](#) [Facebook](#)
Understanding Air Quality Alerts [website](#)
How to Protect Yourself from Eruption Emissions [website](#)
Interagency Information Dashboard [website](#) [twitter](#) [Facebook](#)
Crisis Line of Hawai'i toll-free 24/7 at 1-800-753-6879 [website](#)
National Weather Service Tsunami Earthquake Safety Information
[website](#) [twitter](#) [Facebook](#)

Pacific Tsunami Warning Center [website](#) [twitter](#) [Facebook](#)
Department of Transportation Road and Traffic Conditions [website](#) [twitter](#) [Facebook](#)
Sign Up for Emergency Alerts [website](#)

Hawaii County Government Links

Mayor of Hawaii County [website](#) [twitter](#) [Facebook](#)
County Civil Defense Agency - [website](#), [twitter](#), [Facebook](#)
County Eruption Information Center - Sacred Heart Church, 15-3003 Pahoia Village Rd, Pahoia. [source](#)
County Evacuation Maps - list of downloadable PDFs [website](#)
County Lava Flow online [Map](#)



County Police - [website](#)

Sign up for Emergency Alerts via Text and Email [website](#)

Locations and non-emergency phone numbers for police stations [website](#)

District Health Offices - Family Health Services, Mental Health, WIC, etc. [website](#)

County Mass Transit [website](#)

Road and Traffic Conditions - there's an app for that! [website and map](#)

Department of Public Works [website](#) [twitter](#)

Vulnerable Populations

Hele-On Kako'o paratransit service - <http://www.heleonbus.org/paratransit>

Food Basket - (808) 322-1418 <https://www.hawaiifoodbasket.org/>

Hawaii Island's Foodbank - (808) 933-6030, 40 Holomua St. in Hilo and 73-4161 Uluwini Pl. in Kailua-Kona [source](#)

DOH Crisis Line of Hawai'i (24/7 helpline for people coping with mental and emotional stress caused by the eruptions) - (800) 753-6879.

Hawai'i County Office of Aging - (808) 643-2372, [website](#)

Child and Family Service - (808) 681-3500, [website](#)

Big Island Substance Abuse Council - (808) 969-9994, [website](#), [twitter](#), [Facebook](#)

Dialysis Center - 1-800-377-4607

NGOs / Community Relief

American Red Cross - 808-734-2101 [website](#) (includes situation reports), [twitter](#), [Facebook](#)

Child Care Aware Hotline - 1(800) 424-2246 [website](#) [Facebook](#) [Twitter](#)

Humanity Road - 800-931-1951 [website](#) [Facebook](#) [Twitter](#)

Hawaii Island Humane Society - (808) 329-1175 [website](#), [Facebook](#)

Hawaii Lava Flow Animal Rescue Network - [Facebook](#)

Aloha 'Ilio Rescue (dog rescue) - [website](#) [Facebook](#)

Salvation Army, Hilo Hawaii - (808) 935-5531 [Facebook](#)

Hele On Bus Hawaii Mass Transit Agency - (808) 961-8744 [Website](#)

Pu'uhoonua o Puna (community non-profit providing supplies to evacuees) - [Facebook](#)

Catholic Charities Hawai'i - (808) 521-4357, [website](#) [Facebook](#)

HOPE Services Hawai'i - (808) 935-3050, [website](#)

Essential Needs and Requests

- **Salvation Army** - Salvation Army is alerting the public to imposters. Should any businesses or individuals have any questions about the validity of a request, please contact The Salvation Army at (808) 756-0306 [source](#)
 - The Salvation Army are requesting large-volume meal donations from local restaurants and certified kitchens to meal shelters beginning Wednesday. They also need volunteers to help sort donations and



clothing items with the launch of their new voucher program for residents impacted by the Kilauea eruptions. Those wishing to help can call Salvation Army at 808-756-0306 or sign up [to volunteer online](#). [source](#)

- **Food Basket** - The Food bank is requesting children's juice boxes. Food Basket, Hawaii Island's Food Bank, at 40 Holomua St. in Hilo and 73-4161 Uluwini Pl. in Kailua-Kona. For details, call (808) 933-6030. [source](#) They are also accepting food, water, and supplies. [source](#)
- **Pu'uhonua o Puna** - The Hub located across from Puna High is accepting donations. Needs include water, pet supplies, tarps and tents, infant diapers, AAA batteries, and more. See list here: [source](#)

Shelters

- **Pahoa Pool** has been closed for regular recreational activities and will instead be used as a hygiene center for evacuees [source](#)

Hospitals

- Map of local hospitals [Map](#)

Transportation

- ITA Hilo International Airport - (808) 961-9300 <http://airports.hawaii.gov/ito/>
- KOA Kona International Airport - (808) 327-9520 <http://airports.hawaii.gov/koa/>

Child Care Aware® of America - Landing Page

You can easily access all of our resources by visiting <http://ChildCarePrepare.org>

Email: preparedness@usa.childcareaware.org

Humanity Road – Landing Page

<https://www.humanityroad.org/>

Email: Info@humanityroad.org