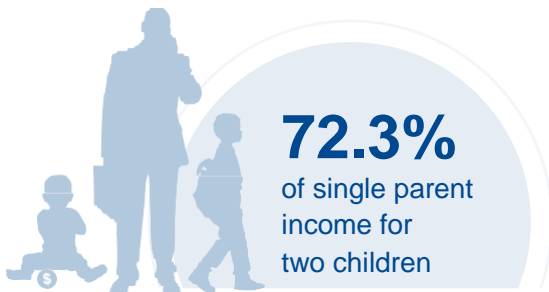
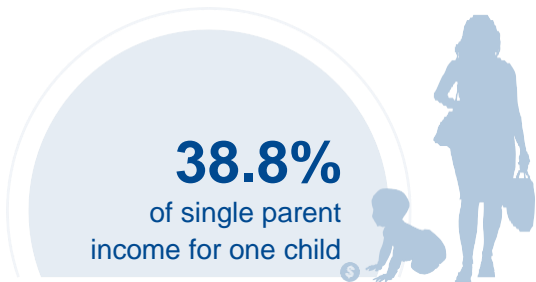


# WYOMING

## COST OF CHILD CARE



**IN WYOMING**, single parents pay 39% of their income for infant care, and 72% of their income for center care for 2 children. Married parents of 2 children living at the poverty line pay 84% of their income for center care. The cost of infant care in Wyoming is more than twice the annual cost of college tuition at a four year college.

PERCENT OF		
CENTER		HOME
10.3%	Infant Care for Married Family	8.8%
19.2%	Two Children for Married Families	17%
38.8%	Infant Care for Single Parent	33.3%
72.3%	Two Children for Single Parent	64.3%
84.4%	Married Family with Two Children at the Poverty Line	75.1%

COST OF CHILD		
CENTER		HOME
\$9,110	Annual Cost of Infant Care	\$7,800
\$16,951	Annual Cost of Care for an infant and 4-year-old	\$15,080
Infant Cost in Center	vs.	Public College Tuition
\$9,110		\$4,891