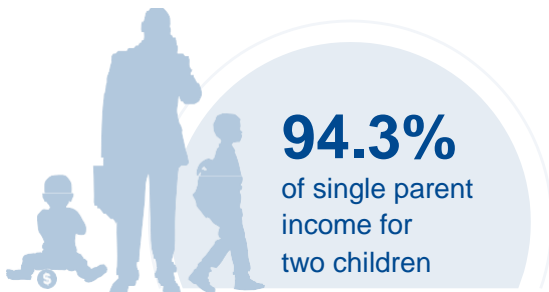
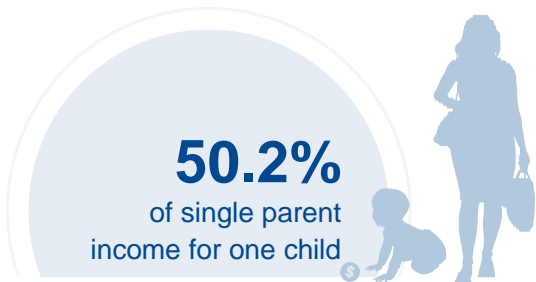




WEST VIRGINIA

COST OF CHILD CARE



IN WEST VIRGINIA, single parents pay half of their income for infant center care, and 94% of their income for center care for 2 children. The cost of center care for 2 children in West Virginia is more than twice the annual cost of college tuition at a four year college.

PERCENT OF		
CENTER		HOME
12.1%	Infant Care for Married Family	9.9%
22.7%	Two Children for Married Families	18.9%
50.2%	Infant Care for Single Parent	41.1%
94.3%	Two Children for Single Parent	78.3%
80.2%	Married Family with Two Children at the Poverty Line	66.7%

COST OF CHILD		
CENTER		HOME
\$8,580	Annual Cost of Infant Care	\$7,020
\$16,120	Annual Cost of Care for an infant and 4-year-old	\$13,390
Infant Cost in Center	vs.	Public College Tuition
\$8,580		\$7,143