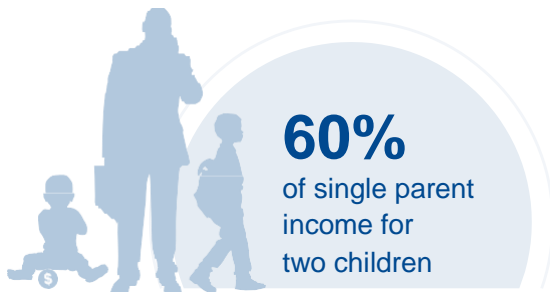
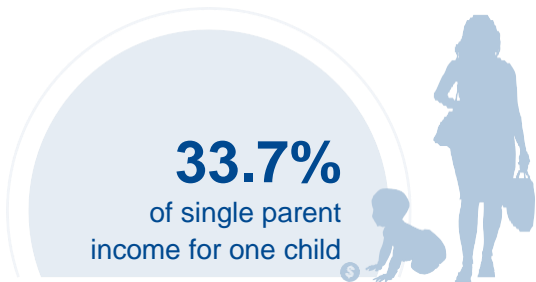




UTAH

COST OF CHILD CARE



IN UTAH, single parents pay 34% of their income for infant center care, and 60% of their income on center care for 2 children. Married parents of 2 children living at the poverty line pay 81% of their income for center care. The cost of infant care in Utah is nearly \$3,000 higher than the annual cost of college tuition at a four year college.

PERCENT OF		
CENTER		HOME
11.8%	Infant Care for Married Family	8.9%
21%	Two Children for Married Families	16.8%
33.7%	Infant Care for Single Parent	25.5%
60%	Two Children for Single Parent	48.1%
81.4%	Married Family with Two Children at the Poverty Line	65.2%

COST OF CHILD		
CENTER		HOME
\$9,183	Annual Cost of Infant Care	\$6,950
\$16,350	Annual Cost of Care for an infant and 4-year-old	\$13,093
Infant Cost in Center	vs.	Public College Tuition
\$9,183		\$6,362

