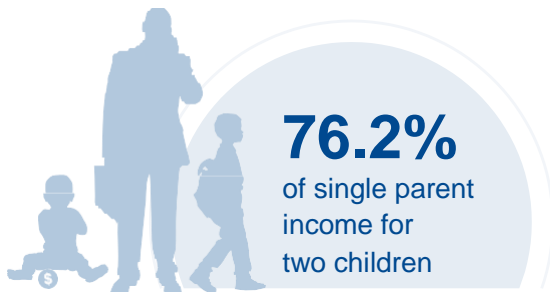
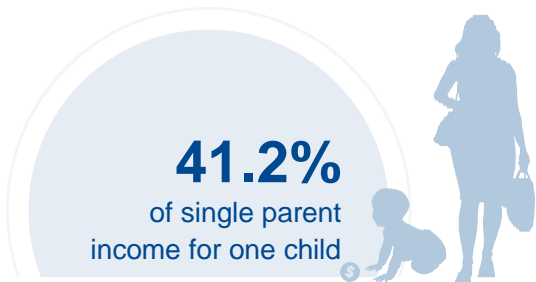




TENNESSEE

COST OF CHILD CARE



IN TENNESSEE, single parents pay 41% of their income for infant center care. Married parents of 2 children living at the poverty line pay 77% of their income for center care. The cost of infant care in Tennessee cost nearly as much as the annual cost of college tuition at a four year college.

| PERCENT OF | | |
|------------|--|-------|
| CENTER | | HOME |
| 11.4% | Infant Care for Married Family | 8.3% |
| 21.1% | Two Children for Married Families | 15.9% |
| 41.2% | Infant Care for Single Parent | 30.1% |
| 76.2% | Two Children for Single Parent | 57.2% |
| 77.1% | Married Family with Two Children at the Poverty Line | 57.9% |

| COST OF CHILD | | |
|-----------------------|--|------------------------|
| CENTER | | HOME |
| \$8,378 | Annual Cost of Infant Care | \$6,115 |
| \$15,491 | Annual Cost of Care for an infant and 4-year-old | \$1,1623 |
| Infant Cost in Center | vs. | Public College Tuition |
| \$8,378 | | \$9,263 |

