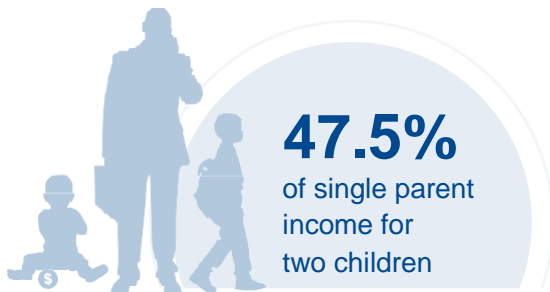
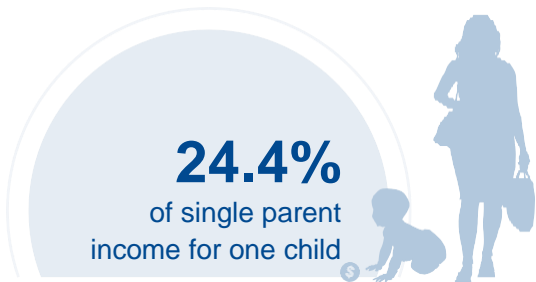




# SOUTH DAKOTA

## COST OF CHILD CARE



**IN SOUTH DAKOTA,** single parents pay 24% of their income for infant center care. Married parents of 2 children living at the poverty line pay 60% of their income for center care. The cost of center care for 2 children in South Dakota is nearly \$4,000 higher than the annual cost of college tuition at a four year college.

PERCENT OF		
CENTER		HOME
7.5%	Infant Care for Married Family	6%
14.7%	Two Children for Married Families	11.9%
24.4%	Infant Care for Single Parent	19.3%
47.5%	Two Children for Single Parent	38.4%
59.5%	Married Family with Two Children at the Poverty Line	48.1%

COST OF CHILD		
CENTER		HOME
\$6,143	Annual Cost of Infant Care	\$4,852
\$11,953	Annual Cost of Care for an infant and 4-year-old	\$9,662
Infant Cost in Center	vs.	Public College Tuition
\$6,143		\$8,054

