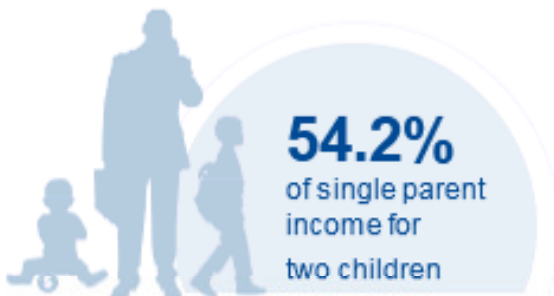




# SOUTH CAROLINA

## COST OF CHILD CARE



**IN SOUTH CAROLINA,** single parents pay 32% of their income for infant center care. Married parents of 2 children living at the poverty line pay 56% of their income for center care. The cost of center care for 2 children in South Carolina costs nearly the same as the annual cost of college tuition at a four year college.]

PERCENT OF		
CENTER		HOME
8.4%	Infant Care for Married Family	6%
14.5%	Two Children for Married Families	11.2%
31.5%	Infant Care for Single Parent	22.3%
54.2%	Two Children for Single Parent	42%
55.5%	Married Family with Two Children at the Poverty Line	43%

COST OF CHILD		
CENTER		HOME
\$6,483	Annual Cost of Infant Care	\$4,590
\$11,140	Annual Cost of Care for an infant and 4-year-old	\$8,640
Infant Cost in Center	vs.	Public College Tuition
\$6,483		\$11,816