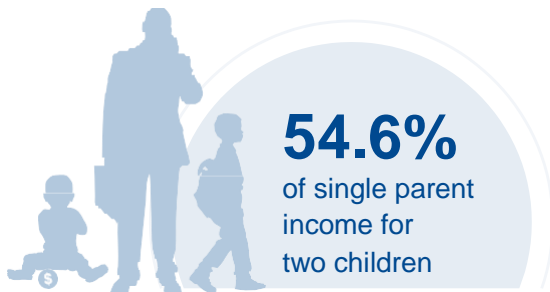
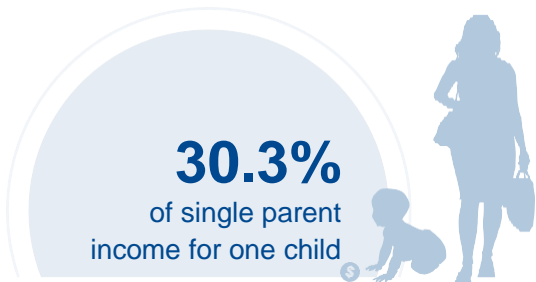




OKLAHOMA

COST OF CHILD CARE



IN OKLAHOMA, single parents pay 30% of their income for infant center care. Married parents of 2 children living at the poverty line pay 59% of their income for center care. The cost of center care for 2 children in Oklahoma is nearly \$4,000 higher than the annual cost of college tuition at a four year college.

PERCENT OF		
CENTER		HOME
9.1%	Infant Care for Married Family	7.8%
16.4%	Two Children for Married Families	14.9%
30.3%	Infant Care for Single Parent	25.9%
54.6%	Two Children for Single Parent	49.5%
59%	Married Family with Two Children at the Poverty Line	53.6%

COST OF CHILD		
CENTER		HOME
\$6,572	Annual Cost of Infant Care	\$5,619
\$11,852	Annual Cost of Care for an infant and 4-year-old	\$10,762
Infant Cost in Center	vs.	Public College Tuition
\$6,572		\$7,449

