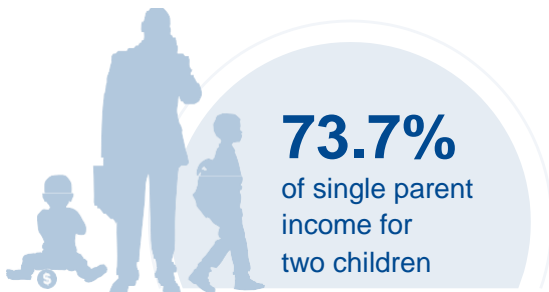
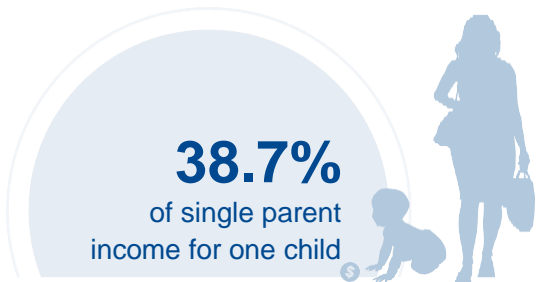




# NORTH DAKOTA

## COST OF CHILD CARE



**IN NORTH DAKOTA,** single parents pay 39% of their income for infant center care. Married parents of 2 children living at the poverty line pay 80% of their income for center care. The cost of care for 2 children in North Dakota is nearly twice the annual cost of college tuition at a four year college.

PERCENT OF		
CENTER		HOME
9.1%	Infant Care for Married Family	7.6%
17.3%	Two Children for Married Families	15%
38.7%	Infant Care for Single Parent	32.6%
73.7%	Two Children for Single Parent	63.8%
80%	Married Family with Two Children at the Poverty Line	69.2%

COST OF CHILD		
CENTER		HOME
\$8,431	Annual Cost of Infant Care	\$7,107
\$16,061	Annual Cost of Care for an infant and 4-year-old	\$13,906
Infant Cost in Center	vs.	Public College Tuition
\$8,431		\$7,687

