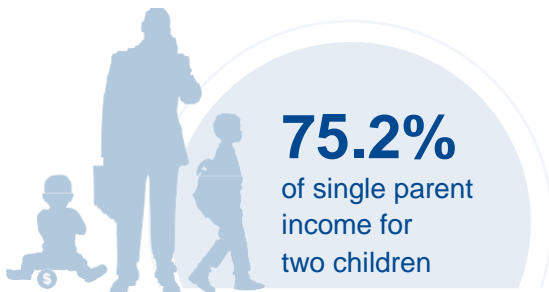
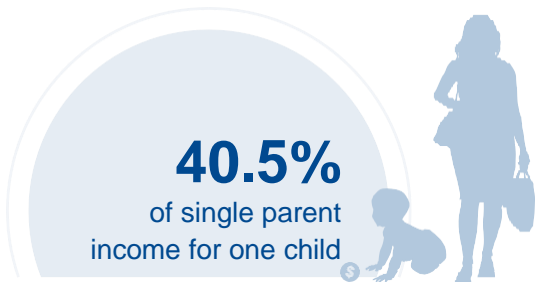




NORTH CAROLINA

COST OF CHILD CARE



IN NORTH CAROLINA, single parents pay 40% of their income for infant center care. Married parents of 2 children who live at the poverty line pay 86% of their income for center care. The cost of care for 2 children in center care in North Carolina is nearly 2.5 times higher than the annual cost of college tuition at a four year college.

PERCENT OF		
CENTER		HOME
12%	Infant Care for Married Family	9.6%
22.3%	Two Children for Married Families	18.2%
40.5%	Infant Care for Single Parent	32.5%
75.2%	Two Children for Single Parent	61.1%
85.5%	Married Family with Two Children at the Poverty Line	69.5%

COST OF CHILD		
CENTER		HOME
\$9,254	Annual Cost of Infant Care	\$7,412
\$17,174	Annual Cost of Care for an infant and 4-year-old	\$13,960
Infant Cost in Center	vs.	Public College Tuition
\$9,254		\$6,969

