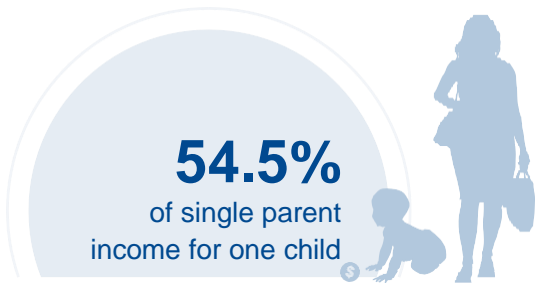




# NEW YORK

## COST OF CHILD CARE



**IN NEW YORK**, single parents pay 55% of their income for infant center care, and nearly 100% of their income on center care for 2 children. Married parents of 2 children living at the poverty line pay 129% of their income for center care. The cost of infant care in New York is nearly twice as much as the annual cost of college tuition at a four year college.

PERCENT OF		
CENTER		HOME
14.9%	Infant Care for Married Family	11.1%
27.2%	Two Children for Married Families	21.4%
54.5%	Infant Care for Single Parent	40.7%
99.6%	Two Children for Single Parent	78.4%
128.6%	Married Family with Two Children at the Poverty Line	101.2%

COST OF CHILD		
CENTER		HOME
\$14,144	Annual Cost of Infant Care	\$10,556
\$25,844	Annual Cost of Care for an infant and 4-year-old	\$20,332
Infant Cost in Center	vs.	Public College Tuition
\$14,144		\$7,645

