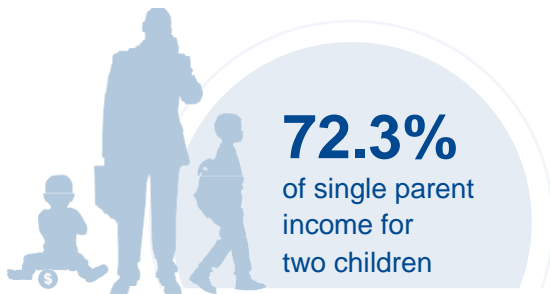
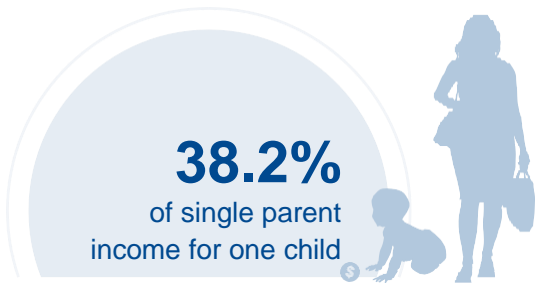




# NEW MEXICO

## COST OF CHILD CARE



**IN NEW MEXICO,** single parents pay 38% of their income for infant care. Married parents of 2 children living at the poverty line pay 74% of their income for center care. The cost of center care for 2 children in New Mexico is nearly twice as much as the annual cost of college tuition at a four year college.

PERCENT OF		
CENTER		HOME
11.6%	Infant Care for Married Family	9.2%
21.9%	Two Children for Married Families	17.9%
38.2%	Infant Care for Single Parent	30.6%
72.3%	Two Children for Single Parent	59.3%
73.6%	Married Family with Two Children at the Poverty Line	60.2%

COST OF CHILD		
CENTER		HOME
\$7,802	Annual Cost of Infant Care	\$6,241
\$14,790	Annual Cost of Care for an infant and 4-year-old	\$12,104
Infant Cost in Center	vs.	Public College Tuition
\$7,802		\$6,405

