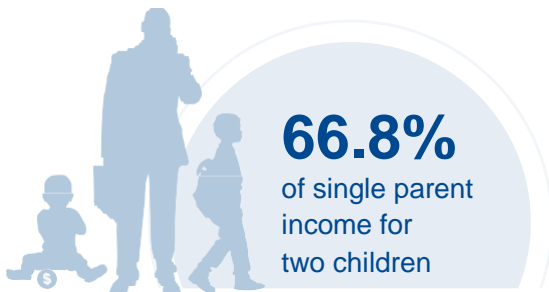
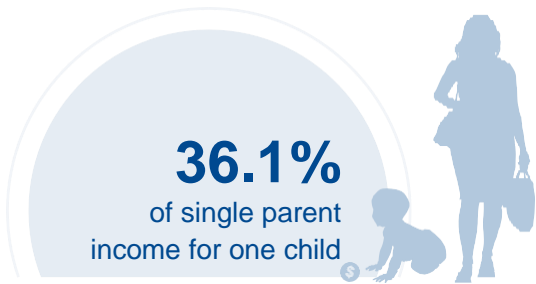




NEVADA

COST OF CHILD CARE



IN NEVADA, single parents pay 36% of their income for infant center care, and 67% for center care for 2 children. Married parents of 2 children living at the poverty line pay 95% of their income for center care. The cost of care for 2 children in Nevada is almost 3 times higher than the annual cost of college tuition at a four year college.

PERCENT OF		
CENTER		HOME
14.4%	Infant Care for Married Family	11.9%
26.6%	Two Children for Married Families	23.1%
36.1%	Infant Care for Single Parent	30%
66.8%	Two Children for Single Parent	58%
95%	Married Family with Two Children at the Poverty Line	82.6%

COST OF CHILD		
CENTER		HOME
\$10,317	Annual Cost of Infant Care	\$8,572
\$19,085	Annual Cost of Care for an infant and 4-year-old	\$16,585
Infant Cost in Center	vs.	Public College Tuition
\$10,317		\$6,661

