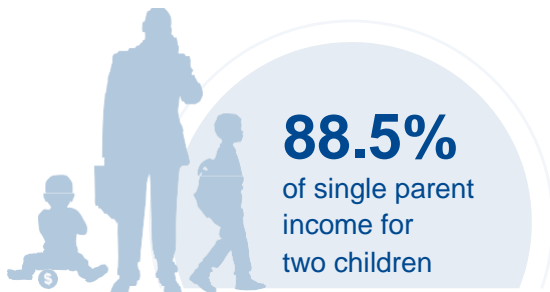
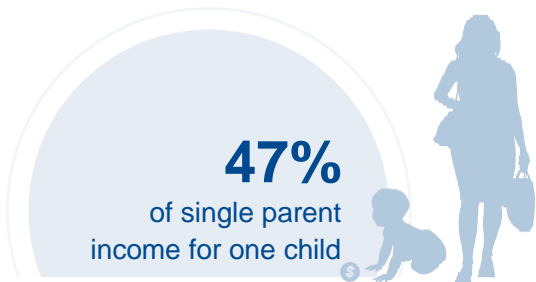




MONTANA

COST OF CHILD CARE



IN MONTANA, single parents pay 47% of their income for infant center care. Married parents of 2 children who live at the poverty line pay 88% of their income for center care. The cost of care for 2 children in Montana is nearly 3 times higher than the annual cost of college tuition at a four year college.

PERCENT OF		
CENTER		HOME
12.5%	Infant Care for Married Family	9.9%
23.5%	Two Children for Married Families	19.2%
47%	Infant Care for Single Parent	37.2%
88.5%	Two Children for Single Parent	72.3%
88%	Married Family with Two Children at the Poverty Line	71.9%

COST OF CHILD		
CENTER		HOME
\$9,383	Annual Cost of Infant Care	\$7,436
\$17,682	Annual Cost of Care for an infant and 4-year-old	\$14,453
Infant Cost in Center	vs.	Public College Tuition
\$9,383		\$6,351

