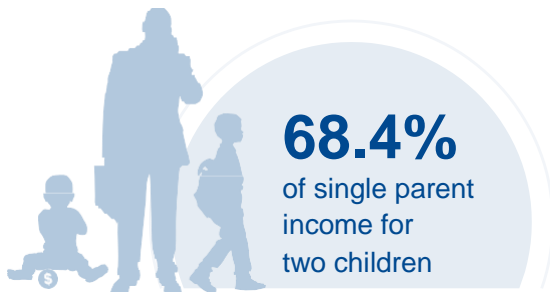
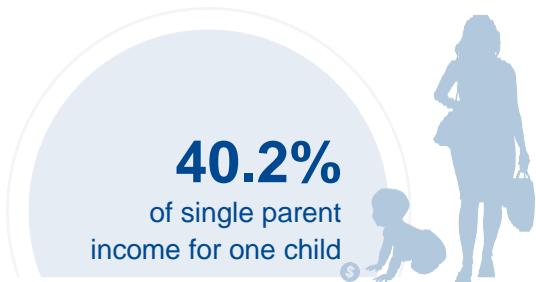




MISSOURI

COST OF CHILD CARE



IN MISSOURI, single parents pay 40% of their income for infant center care, and 69% of their income for care for 2 children. Married parents of 2 children living at the poverty line pay 78% of their income for center care. The cost of infant care in Missouri is more expensive than the annual cost of college tuition at a four year college.

PERCENT OF		
CENTER		HOME
11.4%	Infant Care for Married Family	7.2%
19.4%	Two Children for Married Families	13.4%
40.2%	Infant Care for Single Parent	25.2%
68.4%	Two Children for Single Parent	47.3%
77.1%	Married Family with Two Children at the Poverty Line	53.3%

COST OF CHILD		
CENTER		HOME
\$9,100	Annual Cost of Infant Care	\$5,720
\$15,496	Annual Cost of Care for an infant and 4-year-old	\$10,712
Infant Cost in Center	vs.	Public College Tuition
\$9,100		\$8,553

