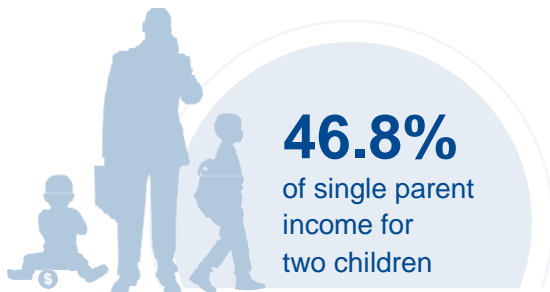
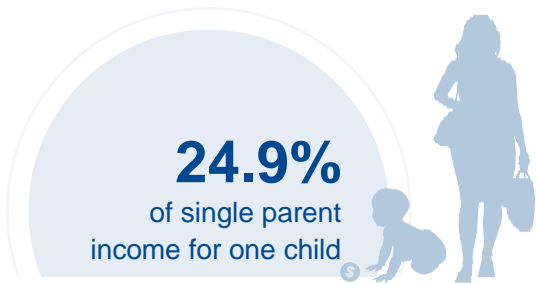




MISSISSIPPI

COST OF CHILD CARE



IN MISSISSIPPI, single parents pay 25% of their income for infant center care. Married parents of 2 children living at the poverty line pay nearly half of their income for center care.

PERCENT OF		
CENTER		HOME
7%	Infant Care for Married Family	4.7%
13.2%	Two Children for Married Families	8.4%
24.9%	Infant Care for Single Parent	16.7%
46.8%	Two Children for Single Parent	29.9%
47.2%	Married Family with Two Children at the Poverty Line	30.2%

COST OF CHILD		
CENTER		HOME
\$5,045	Annual Cost of Infant Care	\$3,394
\$9,484	Annual Cost of Care for an infant and 4-year-old	\$6,068
Infant Cost in Center	vs.	Public College Tuition
\$5,045		\$7,147

