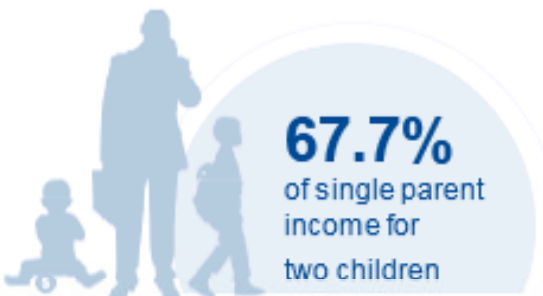
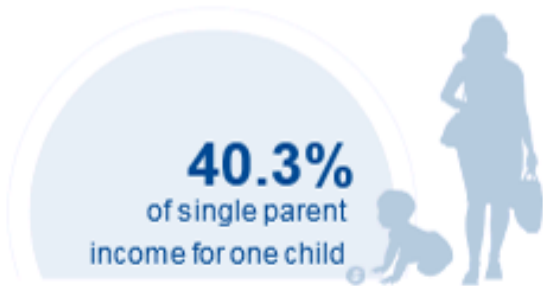




MARYLAND

COST OF CHILD CARE



IN MARYLAND, single parents pay 40% of their income for infant center care. Married parents of 2 children living at poverty line pay 123% of their income for center care. The cost of infant care in Maryland is nearly \$5,000 higher than the annual cost of college tuition at a four year college.

PERCENT OF		
CENTER		HOME
12.7%	Infant Care for Married Family	8.8%
21.4%	Two Children for Married Families	16%
40.3%	Infant Care for Single Parent	27.8%
67.7%	Two Children for Single Parent	50.6%
123.3%	Married Family with Two Children at the Poverty Line	92%

COST OF CHILD		
CENTER		HOME
\$14,726	Annual Cost of Infant Care	\$10,149
\$24,765	Annual Cost of Care for an infant and 4-year-old	\$18,487
Infant Cost in Center	vs.	Public College Tuition
\$14,726		\$9,163

