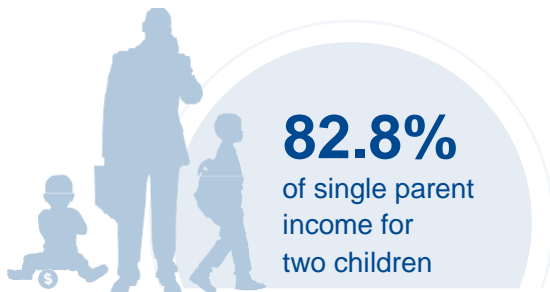
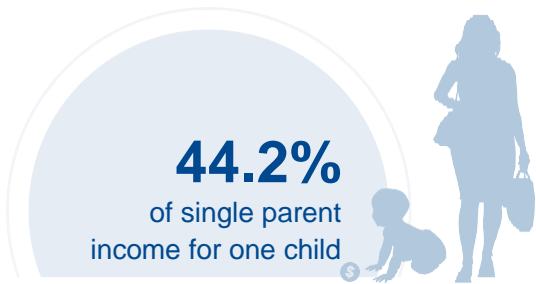




MAINE

COST OF CHILD CARE



IN MAINE, single parents pay 44% of their income for infant center care and 83% of their income for center care for 2 children. Married parents of 2 children who live at the poverty line pay 90% of their income for center care. The cost of center care for 2 children in Maine is twice the annual cost of college tuition at a four year college.

PERCENT OF		
CENTER		HOME
11.8%	Infant Care for Married Family	8.5%
22%	Two Children for Married Families	16.7%
44.2%	Infant Care for Single Parent	31.9%
82.8%	Two Children for Single Parent	62.6%
90.3%	Married Family with Two Children at the Poverty Line	68.2%

COST OF CHILD		
CENTER		HOME
\$9,677	Annual Cost of Infant Care	\$6,989
\$18,132	Annual Cost of Care for an infant and 4-year-old	\$13,708
Infant Cost in Center	vs.	Public College Tuition
\$9,677		\$9,572