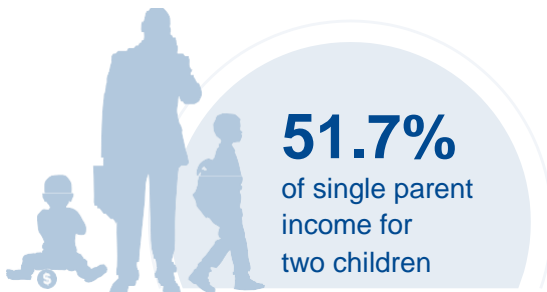
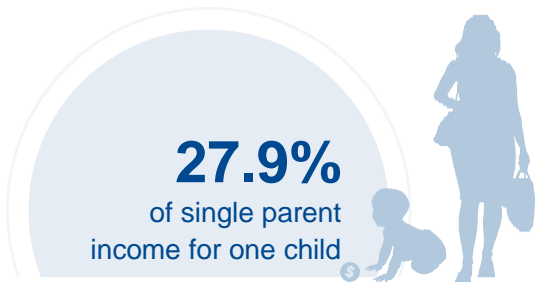




# LOUISIANA

## COST OF CHILD CARE



**IN LOUISIANA,** single parents pay 28% of their income for infant center care, and 52% of their income for center care for 2 children. Married parents of 2 children who live at the poverty line pay 53% of their income for center care. The cost of care for 2 children in center care and home-based is more than the annual cost of college tuition at a four year college.

PERCENT OF		
CENTER		HOME
6.7%	Infant Care for Married Family	5.7%
12.5%	Two Children for Married Families	11.1%
27.9%	Infant Care for Single Parent	23.5%
51.7%	Two Children for Single Parent	46.1%
53.1%	Married Family with Two Children at the Poverty Line	47.4%

COST OF CHILD		
CENTER		HOME
\$5,754	Annual Cost of Infant Care	\$4,849
\$10,674	Annual Cost of Care for an infant and 4-year-old	\$9,522
Infant Cost in Center	vs.	Public College Tuition
\$5,754		\$8,130