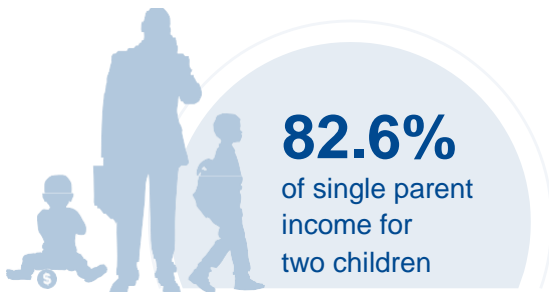
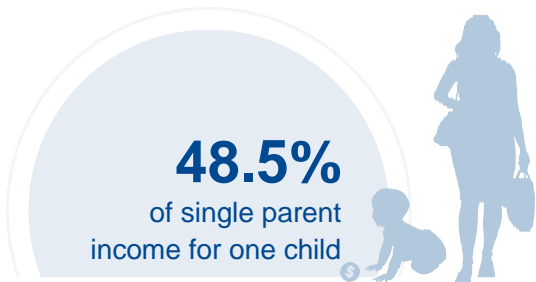




KANSAS

COST OF CHILD CARE



IN KANSAS, single parents pay 49% of their income for infant center care, and 83% of their income on center care for 2 children. Married parents of 2 children living at the poverty line pay 97% of their income for center care. The cost of infant care in Kansas is more than \$3,000 more than the annual cost of college tuition at a four year college.

PERCENT OF		
CENTER		HOME
14%	Infant Care for Married Family	8.3%
23.8%	Two Children for Married Families	15.6%
48.5%	Infant Care for Single Parent	28.9%
82.6%	Two Children for Single Parent	54.2%
97.3%	Married Family with Two Children at the Poverty Line	63.9%

COST OF CHILD		
CENTER		HOME
\$11,482	Annual Cost of Infant Care	\$6,830
\$19,547	Annual Cost of Care for an infant and 4-year-old	\$12,835
Infant Cost in Center	vs.	Public College Tuition
\$11,482		\$8,442

