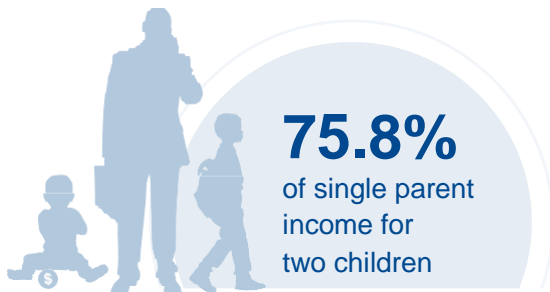
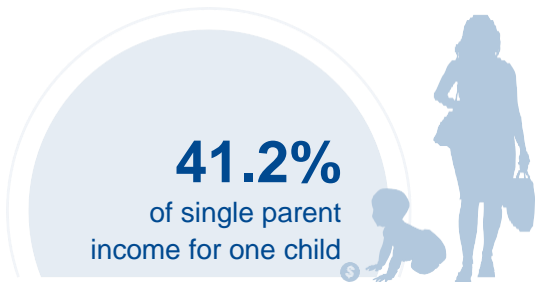




IOWA

COST OF CHILD CARE



IN IOWA, single parents pay 41% of their income for infant center care, and 76% of their income for center care for 2 children. Married parents of 2 children who live at the poverty line pay 92% of their income for center care. The cost of center-based care for 2 children is more than 2 times the annual cost of college tuition at a four year college.

PERCENT OF		
CENTER		HOME
11.8%	Infant Care for Married Family	8.2%
21.8%	Two Children for Married Families	16%
41.2%	Infant Care for Single Parent	28.5%
75.8%	Two Children for Single Parent	55.6%
91.8%	Married Family with Two Children at the Poverty Line	67.4%

COST OF CHILD		
CENTER		HOME
\$10,015	Annual Cost of Infant Care	\$6,944
\$18,448	Annual Cost of Care for an infant and 4-year-old	\$13,537
Infant Cost in Center	vs.	Public College Tuition
\$10,015		\$7,877

