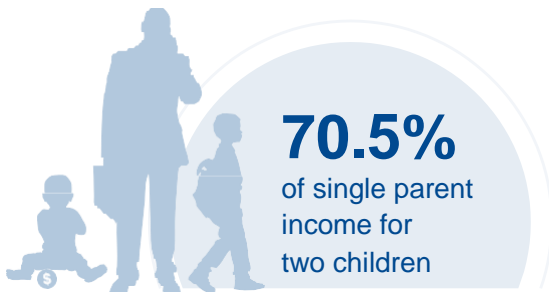
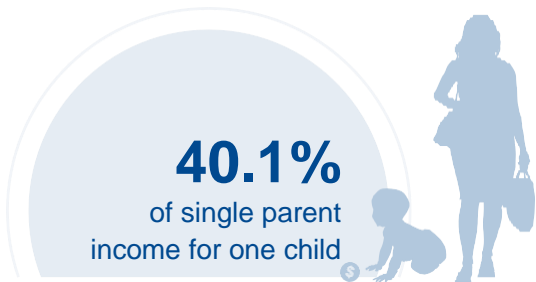




INDIANA

COST OF CHILD CARE



IN INDIANA, single parents pay 40% of their income for infant center care. Married parents of 2 children living at the poverty line pay 78% of their income for center care. The cost of infant care in Indiana costs nearly as much as the annual cost of college tuition at a four year college.

PERCENT OF		
CENTER		HOME
11.5%	Infant Care for Married Family	8.8%
20.2%	Two Children for Married Families	16%
40.1%	Infant Care for Single Parent	30.7%
70.5%	Two Children for Single Parent	55.7%
78.1%	Married Family with Two Children at the Poverty Line	61.7%

COST OF CHILD		
CENTER		HOME
\$8,929	Annual Cost of Infant Care	\$6,833
\$15,697	Annual Cost of Care for an infant and 4-year-old	\$12,404
Infant Cost in Center	vs.	Public College Tuition
\$8,929		\$9,119

