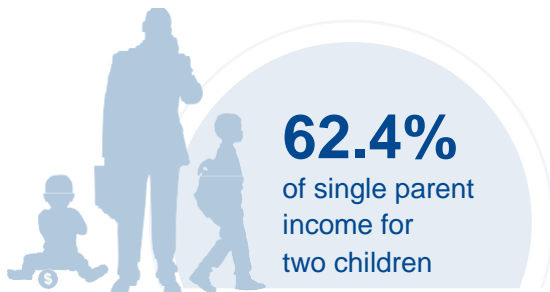
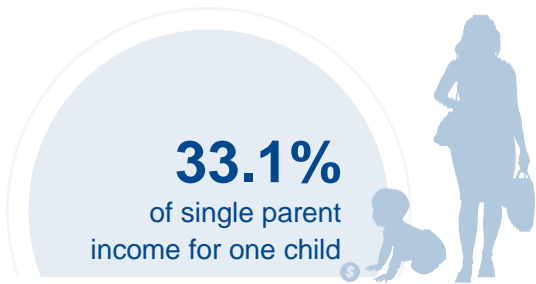




IDAHO

COST OF CHILD CARE



IN IDAHO, single parents pay 33% of their income for infant care. Married parents of 2 children who live at the poverty line pay 69% of their income for center care. The cost of care for two children in Idaho is nearly twice the annual cost of college tuition at a four year college for center-based and home-based care.

PERCENT OF		
CENTER		HOME
10.7%	Infant Care for Married Family	9.5%
20.2%	Two Children for Married Families	18.4%
33.1%	Infant Care for Single Parent	29.5%
62.4%	Two Children for Single Parent	56.7%
69.2%	Married Family with Two Children at the Poverty Line	62.8%

COST OF CHILD		
CENTER		HOME
\$7,385	Annual Cost of Infant Care	\$6,563
\$13,912	Annual Cost of Care for an infant and 4-year-old	\$12,624
Infant Cost in Center	vs.	Public College Tuition
\$7,385		\$6,818

