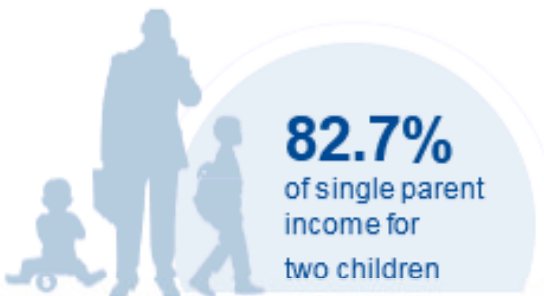
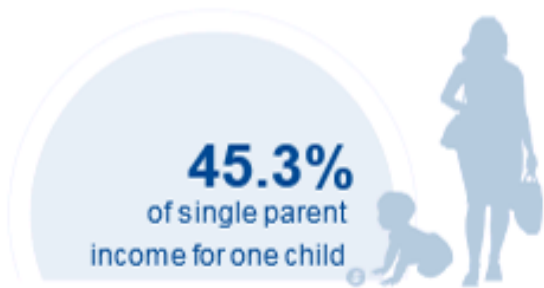




HAWAII

COST OF CHILD CARE



IN HAWAII, single parents pay 45% of their income for infant center care and 83% of their income for center care for 2 children. Married parents with 2 children who live at the poverty line pay 107% of their income for center care. The cost of care for two children is nearly 2.5 times higher than the annual cost of college tuition at a four year college.

PERCENT OF		
CENTER		HOME
15.7%	Infant Care for Married Family	9.1%
28.7%	Two Children for Married Families	17.9%
45.3%	Infant Care for Single Parent	26.1%
82.7%	Two Children for Single Parent	51.7%
107.4%	Married Family with Two Children at the Poverty Line	67.1%

COST OF CHILD		
CENTER		HOME
\$13,584	Annual Cost of Infant Care	\$7,836
\$24,816	Annual Cost of Care for an infant and 4-year-old	\$15,516
Infant Cost in Center	vs.	Public College Tuition
\$13,584		\$10,174