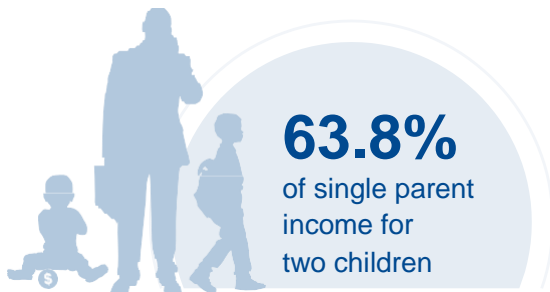
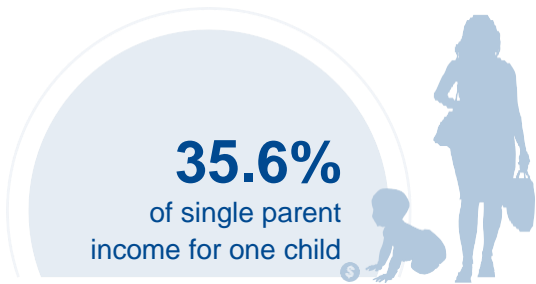




FLORIDA

COST OF CHILD CARE



IN FLORIDA, single parents pay 64% of their income for center care for 2 children. Married parents of 2 children who live at the poverty line pay nearly 78% of their income for center care. The cost of full-time care in centers and home-based programs for infants is higher than the annual cost of college tuition at a four year college.

PERCENT OF		
CENTER		HOME
11.9%	Infant Care for Married Family	10.5%
21.3%	Two Children for Married Families	19.3%
35.6%	Infant Care for Single Parent	31.2%
63.8%	Two Children for Single Parent	57.7%
77.7%	Married Family with Two Children at the Poverty Line	70.2%

COST OF CHILD		
CENTER		HOME
\$8,719	Annual Cost of Infant Care	\$7,642
\$15,616	Annual Cost of Care for an infant and 4-year-old	\$14,112
Infant Cost in Center	vs.	Public College Tuition
\$8,719		\$6,360