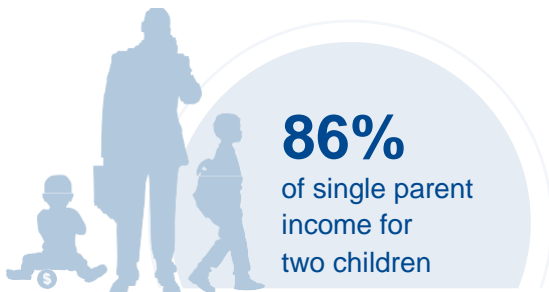
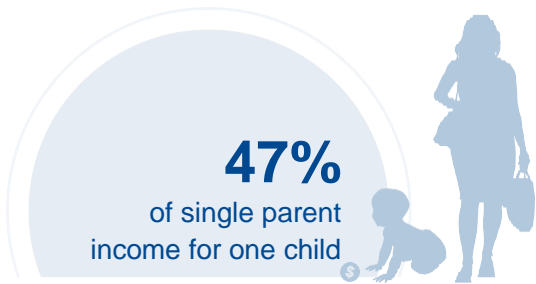




CONNECTICUT

COST OF CHILD CARE



IN CONNECTICUT, single parents pay 47% of their income for infant center care and 86% of their income on center care for 2 children. Married parents who live at the poverty line and have 2 children pay 128% of their income for center care. The cost of center care in Connecticut for 2 children is nearly 2.5 times more than the annual cost of college tuition at a four year college.

PERCENT OF		
CENTER		HOME
11.8%	Infant Care for Married Family	8.6%
21.7%	Two Children for Married Families	16.9%
47%	Infant Care for Single Parent	34.3%
86%	Two Children for Single Parent	67.1%
128.1%	Married Family with Two Children at the Poverty Line	99.9%

COST OF CHILD		
CENTER		HOME
\$14,079	Annual Cost of Infant Care	\$10,280
\$25,748	Annual Cost of Care for an infant and 4-year-old	\$20,078

Infant Cost in Center	vs.	Public College Tuition
\$14,079		\$11,17

