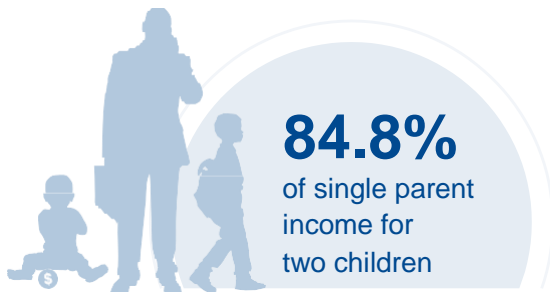
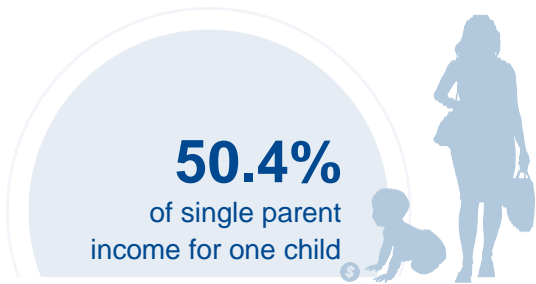




# CALIFORNIA

## COST OF CHILD CARE



**IN CALIFORNIA,** single parents pay more than half of their income for infant center care. Married parents who live at the poverty line and have two children pay 111.8% of their income for center care. The cost of center care for 2 children in California is more than twice the annual cost of college tuition at a four year college.

PERCENT OF		
CENTER		HOME
15.4%	Infant Care for Married Family	9.8%
25.9%	Two Children for Married Families	18.8%
50.4%	Infant Care for Single Parent	32%
84.8%	Two Children for Single Parent	61.7%
111.8%	Married Family with Two Children at the Poverty Line	81.3%

COST OF CHILD		
CENTER		HOME
\$13,343	Annual Cost of Infant Care	\$8,472
\$22,460	Annual Cost of Care for an infant and 4-year-old	\$16,331
Infant Cost in Center	vs.	Public College Tuition
\$13,343		\$9,267

