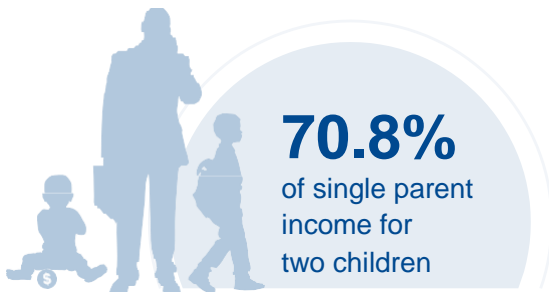
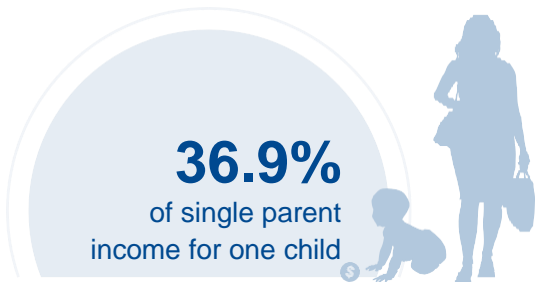




ALASKA

COST OF CHILD CARE



IN ALASKA, a single parent pays nearly 71% of their income for center-based care for two children. Married parents who live at the poverty line and have 2 children pay 89% of their income for child care. The cost of care for two children in a center in Alaska is close to three times the annual cost of college tuition at a four year college.

PERCENT OF		
CENTER		HOME
11.5%	Infant Care for Married Family	9.9%
22%	Two Children for Married Families	19.3%
36.9%	Infant Care for Single Parent	31.8%
70.8%	Two Children for Single Parent	62.2%
89.1%	Married Family with Two Children at the Poverty Line	78.3%

COST OF CHILD		
CENTER		HOME
\$11,700	Annual Cost of Infant Care	\$10,101
\$22,464	Annual Cost of Care for an infant and 4-year-old	\$19,746
Infant Cost in Center	vs.	Public College Tuition
\$11,700		\$6,703

