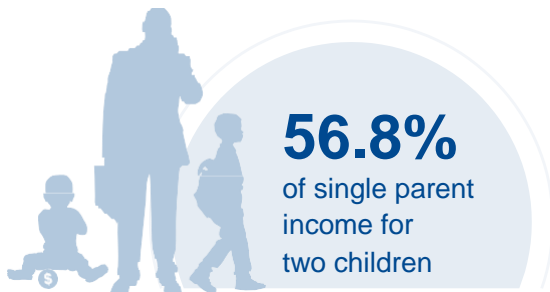
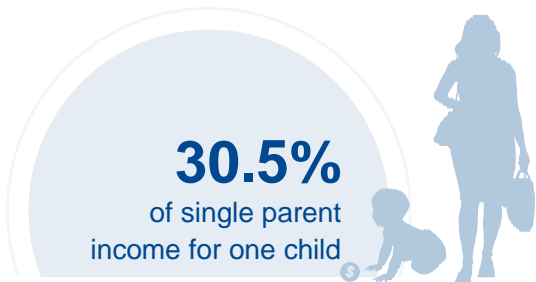




# ALABAMA

## COST OF CHILD CARE



**IN ALABAMA,** single parents pay nearly a third of their income for infant center-based care. Single parents who in need of care for two children pay more than half of their income for child care in a center. The cost of care for two children in Alabama is more than the annual cost of college tuition at a four year college.

PERCENT OF		
CENTER		HOME
7.5%	Infant Care for Married Family	6.4%
14%	Two Children for Married Families	13%
30.5%	Infant Care for Single Parent	26%
56.8%	Two Children for Single Parent	52.7%
52.4%	Married Family with Two Children at the Poverty Line	48.5%

COST OF CHILD		
CENTER		HOME
\$5,644	Annual Cost of Infant Care	\$4,807
\$10,521	Annual Cost of Care for an infant and 4-year-old	\$9,748
Infant Cost in Center	vs.	Public College Tuition
\$5,644		\$9,745

